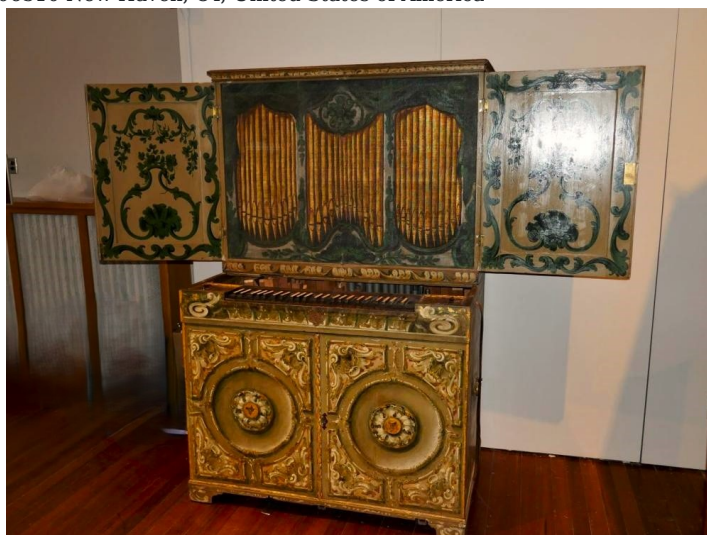


New Haven, CT, Yale University, Belle Skinner Collection

Yale University, Trumbull Street, 06510 New Haven, CT, United States of America



Builder	J. Snetzler
Year	1742
Period/Style	Baroque
Stops	5
Keyboards	1
Keyaction	tracker/mechanical

Description

The organ at Yale University, crafted by Johannes Schnetzler in 1742 in London, showcases the historical craftsmanship and technical aspects of 18th-century organ building. This organ is notable for its retention of all-metal pipes with Mander slide tuners added in 1983, which are used to adjust the tuning of the pipes more precisely. The specification of the organ includes a DIAPAISON at 8', made from stopt wood including oak and some pine, spanning the full compass. The OP DIAPASON at 8' begins from middle C and is made from common metal, reflecting typical material use for treble extensions during the period.

Additional stops in the organ include a FLAUTA at 4' in the bass register, with the first 24 pipes made from stopt wood, and an unlabeled Flauta in the treble also at 4'. The FIFTEENTH at 2', made from common metal, runs through the entire compass, adding brilliance to the organ's sound. The CORNET and SESQUIALTRA, starting from middle C in the treble, and a bass SESQUIALTRA for the first 24 notes, both feature two ranks of common metal. Modern conveniences such as a machine-stop foot pedal, which controls upperwork, and a blowing strap for assistant operation during performance, alongside a wind indicator rod, integrate traditional organ craftsmanship with functional enhancements for contemporary use.

Stoplist/Disposition

Manual

Diapason 8' (bass/treble)

Flauta 4' (bass/treble)

Fifteenth 2'

Cornet (treble)

Sesquialtera (2 ranks, bass/treble)

Additional:

Sources

<https://beta.pipeorgandatabase.org/instruments/1063>